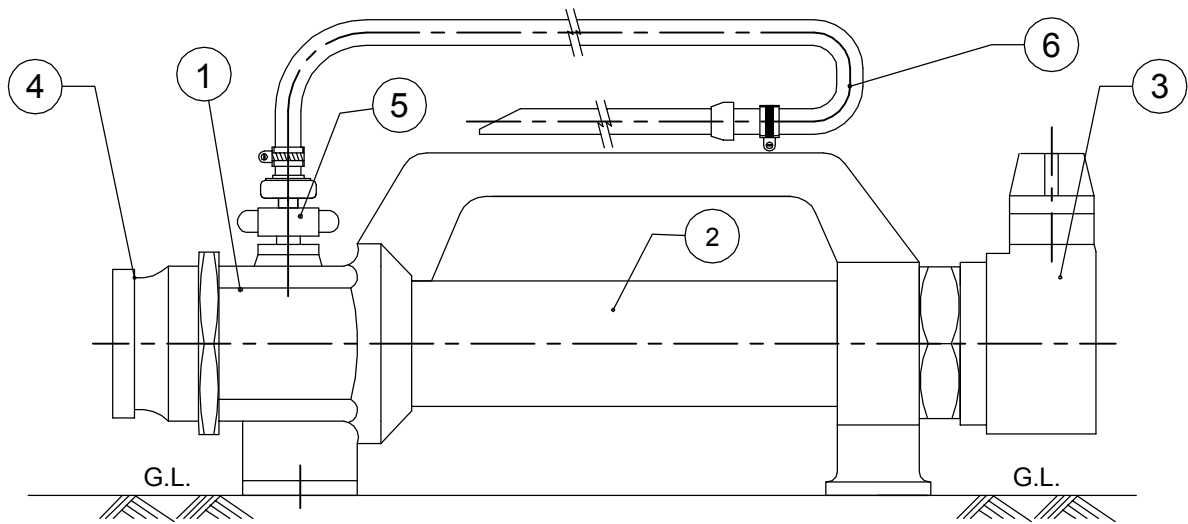


THIS DRAWING AND DESIGN IS A PROPERTY OF 'FIRETECH' AND MUST NOT BE COPIED OR LEND WITHOUT THEIR PERMISSION IN WRITING.



MATERIAL OF CONSTRUCTION:-

S.NO.	DESCRIPTION	MATERIAL
1	BODY	ALUMINIUM ALLOY
2	BARREL	ALUMINIUM ALLOY
3	FEMALE COUPLING	ALUMINIUM ALLOY
4	MALE COUPLING	ALUMINIUM ALLOY
5	FOAM COUPLING	COPPER ALLOY
6	PICK-UP TUBE	NON-COLLAPSIBLE P.V.C. HOSE WITH SS:304 DIP PIPE
7	FINISH	INDUCTOR-PAINTED YELLOW TO SHADE NO:356 OF IS:5
		COUPLINGS-BUFFED

TECHNICAL DETAILS:-

1. WORKING PRESSURE:- 7 BAR TO 12 BAR
2. MAX. ALLOWABLE BACK-PRESSURE:- 65% OF INLET PRESSURE
3. HYDRAULIC TEST PRESSURE:- 18 BAR FOR 5 MINS.

PERFORMANCE DETAILS:-

ITEM CODE	PRESSURE		NOMINAL FLOW		FOAM INDUCTION	WEIGHT WITH PICK-UP TUBE
	BAR	PSI	LPM	GPM		
PFI-225	7	100	225	59	3%	4 KG
PFI-450	7	100	450	118	3%	4 KG
PFI-900	7	100	900	237	3%	6 KG

NOTE:- ALL DIMENSIONS ARE IN mm, UNLESS OTHERWISE SPECIFIED.